

VitaFount S

Fountain Solution Additive

VitaFount S is a fountain solution additive for sheet-fed offset and continuous form printing. Applicable particularly in food packaging printing.

Application

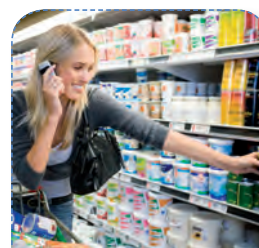
- use at a concentration of 2 - 3 %
- for IPA-reduction to 6 - 8 %
- very stable ink-/water-balance
- reduced water pick-up of the ink, therefore higher ink densities obtained
- fast start-up and stable printing for long runs
- for water hardness 5 - 20° dH (total hardness)
- pH-value 4.8 - 5.0 (depending on water hardness)
- reduced calcium deposits on ink rollers
- corrosion inhibited
- minimises build-up of paper dust and ink on the blanket
- suitable for CTP plates
- effective plate protection during press stops
- suitable for copper rollers
- increased conductivity per % input: 420 µS/cm
- density 1.10 (kg/l)
- suitable for UV and Hybrid inks as well as special inks containing metallic pigments

Features

Before applying VitaFount S, the fountain system must be completely emptied and cleaned thoroughly, preferably using BöttcherPro Hydroclean.

It is approved by the ISEGA, intended use provided, VitaWash S is therefore appropriate for the application in the food packaging printing.

Note





- 20 kg can
- 200 kg container

Package

VitaFont S is classified according to EC-Directive 199/45/EC - in its latest version - and does not need to be marked.

VitaFont S is not a dangerous good in the sense of national and international transport regulations.

Marking

All our product information sheets, as well as our contact data you will find on the internet www.boettcher-systems.com.

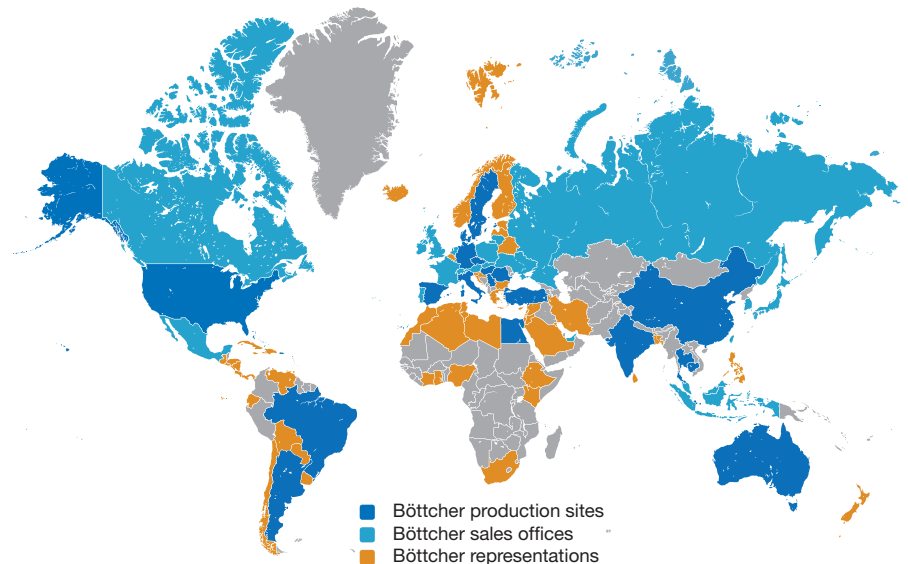
Felix Böttcher GmbH & Co. KG

Headquarter

Stolberger Str. 351 - 353
 50933 Cologne, Germany
 Phone +49 (0) 221 4907 - 1
 Fax +49 (0) 221 4907 - 435
koeln@boettcher-systems.com



www.boettcher.de/contact



The purpose of these technical data is to assist our customers. We list general experience and laboratory test. Translation of these to actual applications is, however, subject to a variety of factors which are beyond our control. We ask for understanding that claims can not be based upon them.