

# VitaFount Gold

## Fountain Solution Additive

VitaFount Gold is a fountain solution additive for sheet-fed offset.

- applicable particularly in food packaging printing
- suitable for UV and Hybrid inks as well as special inks containing metallic pigments

*Application*

- density 1.145 (kg/l)
- increased conductivity per % input:  
500 µS/cm
- use at a concentration of 2 - 3 %
- for IPA-reduction to 6 - 8 %
- for water hardness 5 – 20° dH
- pH-value 5.07 (depending on water hardness)
- suitable for UV and Hybrid inks as well as special inks containing metallic pigments / silver- and gold-ink

**Principally, all our fountain additives have the following characteristics:**

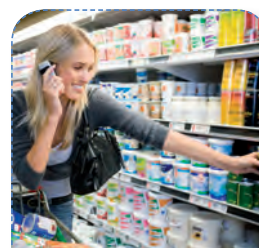
- very stable ink-/water-balance
- reduced water pick-up of the ink, therefore ink densities obtained
- fast start-up and stable printing for long runs
- corrosion inhibited
- minimises build-up of paper dust and ink on the blanket
- suitable for CTP plates
- effective plate protection during press stops

*Features*

Before applying VitaFount Gold, the fountain system must be completely emptied and cleaned thoroughly, preferably using BöttcherPro Hydroclean.

It is approved by the ISEGA, intended use provided, VitaFount Gold is therefore appropriate for the application in the food packaging printing.

*Note*





- 20 kg can
- 200 kg drum

Package

VitaFount Gold is classified according to EC-Directive 1999/45/EC - in its latest version. It is not a dangerous good in the sense of national and international transport regulations.

Marking

All our product information sheets, as well as our contact data you will find on the internet [www.boettcher-systems.com](http://www.boettcher-systems.com).

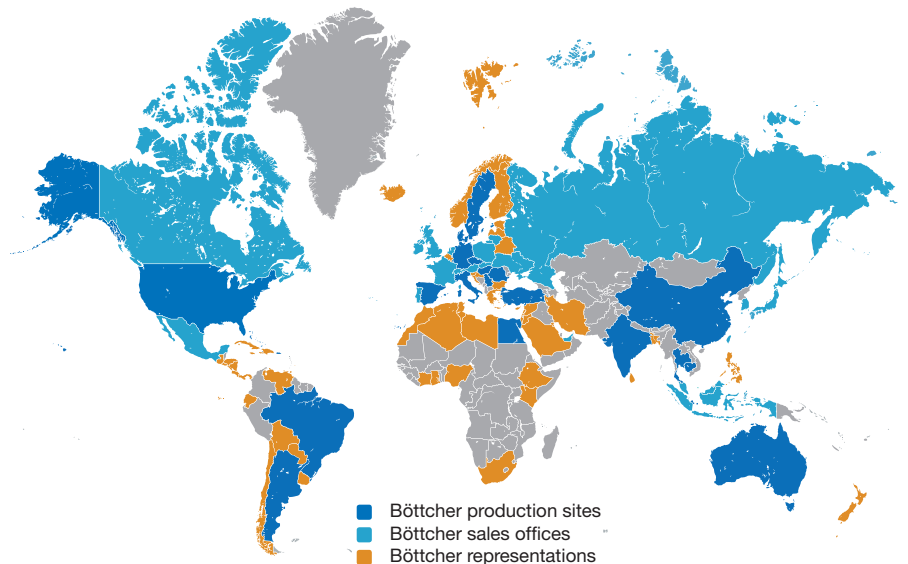
### Felix Böttcher GmbH & Co. KG

#### Headquarter

Stolberger Str. 351 - 353  
 50933 Cologne, Germany  
 Phone +49 (0) 221 4907 - 1  
 Fax +49 (0) 221 4907 - 435  
[koeln@boettcher-systems.com](mailto:koeln@boettcher-systems.com)



[www.boettcher.de/contact](http://www.boettcher.de/contact)



The purpose of these technical data is to assist our customers. We list general experience and laboratory test. Translation of these to actual applications is, however, subject to a variety of factors which are beyond our control. We ask for understanding that claims can not be based upon them.